



# Cdk10 Polyclonal Antibody

<b>Catalog No</b>	YP-Ab-16697
<b>Isotype</b>	IgG
<b>Reactivity</b>	Human;Mouse;Rat
<b>Applications</b>	WB;IHC;IF;ELISA
<b>Gene Name</b>	CDK10
<b>Protein Name</b>	Cyclin-dependent kinase 10
<b>Immunogen</b>	The antiserum was produced against synthesized peptide derived from human CDK10. AA range:51-100
<b>Specificity</b>	Cdk10 Polyclonal Antibody detects endogenous levels of Cdk10 protein.
<b>Formulation</b>	Liquid in PBS containing 50% glycerol, 0.5% BSA and 0.02% sodium azide.
<b>Source</b>	Polyclonal, Rabbit,IgG
<b>Purification</b>	The antibody was affinity-purified from rabbit antiserum by affinity-chromatography using epitope-specific immunogen.
<b>Dilution</b>	WB: 1/500 - 1/2000. IHC: 1/100 - 1/300. ELISA: 1/10000.. IF 1:50-200
<b>Concentration</b>	1 mg/ml
<b>Purity</b>	≥90%
<b>Storage Stability</b>	-20°C/1 year
<b>Synonyms</b>	CDK10; Cyclin-dependent kinase 10; Cell division protein kinase 10; Serine/threonine-protein kinase PISLRE
<b>Observed Band</b>	43kD
<b>Cell Pathway</b>	Cytoplasm, cytoskeleton, cilium basal body .
<b>Tissue Specificity</b>	Brain,Colon,Kidney,Lung,
<b>Function</b>	catalytic activity:ATP + a protein = ADP + a phosphoprotein.,similarity:Belongs to the protein kinase superfamily.,similarity:Belongs to the protein kinase superfamily. CMGC Ser/Thr protein kinase family. CDC2/CDKX subfamily.,similarity:Contains 1 protein kinase domain.,
<b>Background</b>	The protein encoded by this gene belongs to the CDK subfamily of the Ser/Thr protein kinase family. The CDK subfamily members are highly similar to the gene products of <i>S. cerevisiae</i> <i>cdc28</i> , and <i>S. pombe</i> <i>cdc2</i> , and are known to be essential for cell cycle progression. This kinase has been shown to play a role in cellular proliferation and its function is limited to cell cycle G2-M phase. Multiple transcript variants encoding different isoforms have been found for this gene. [provided by RefSeq, May 2009],



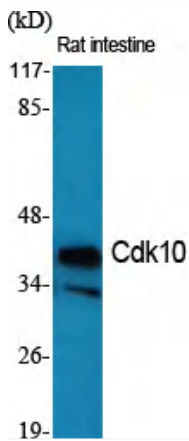
**matters needing attention**

Avoid repeated freezing and thawing!

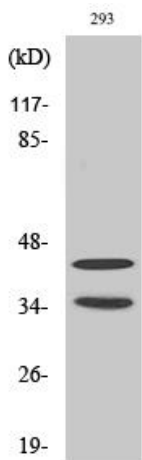
**Usage suggestions**

This product can be used in immunological reaction related experiments. For more information, please consult technical personnel.

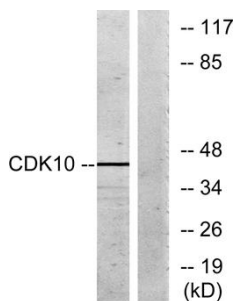
**Products Images**



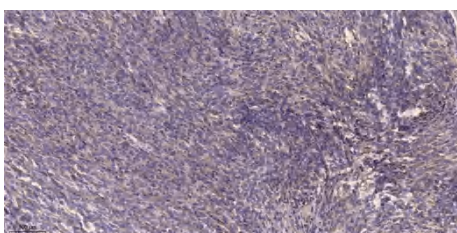
Western Blot analysis of various cells using Cdk10 Polyclonal Antibody diluted at 1:500



Western Blot analysis of 293 cells using Cdk10 Polyclonal Antibody diluted at 1:500



Western blot analysis of lysates from 293 cells, using CDK10 Antibody. The lane on the right is blocked with the synthesized peptide.



Immunohistochemical analysis of paraffin-embedded human Colon cancer. 1, Antibody was diluted at 1:200(4° overnight). 2, Tris-EDTA,pH9.0 was used for antigen retrieval. 3,Secondary antibody was diluted at 1:200(room temperature, 45min).